



**Placement
Brochure
2022-23**

**MTech in Biotechnology
School of Biosciences and Bioengineering**





HOW IS THIS PROGRAMME DIFFERENT?

- ❖ Experiments/practical-based learning.
- ❖ Strong engineering emphasis.
- ❖ Freedom to choose between multiple specializations.
- ❖ Industrial involvement in teaching courses.



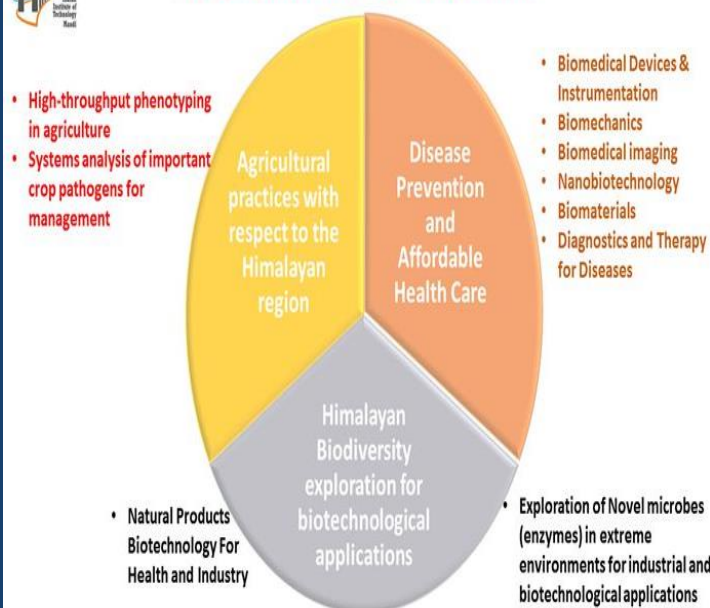
About the Program

The goal is to train the next generation of students with cutting-edge knowledge and skills suitable towards biotechnological research and Bio-industry needs such as biomedical/biopharma etc.

The curriculum of the MTech in Biotechnology program at IIT Mandi is directed towards the fundamental and practical understanding of the core biotechnology areas along with specialized fields in “Systems Biology” and “Medical and Nano-biotechnology”.



Research Themes @ BioX Centre



WHY HIRE FROM IIT MANDI?

- IIT Mandi ranked #20 in NIRF 2022.
- IIT Mandi has outstanding faculty from prestigious universities in India and overseas.
- Teaching and research coexist at IIT Mandi, complementing each other.

COURSES OFFERED

Core

- Advanced cell Biology
- Cell physiology in Health and Disease
- Quantitative and Computational Biology
- Cellular Bioprocess Technology
- Analytical Biotechniques
- Molecular Biotechnology

LABORATORY COURSES

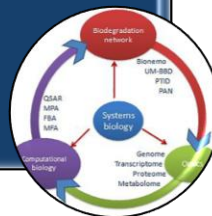
- Cell Biology and Physiology
- Computational Biology and Cellular Bioprocess Technology
- Analytical and Molecular Biotechnology

M.TECH. PROJECT

- Duration: 1 Year

- Metabolic Systems Biology
 - Proteomics
- Metagenomics, and Next-Generation Sequencing Technologies
- Systems Biology Specialization Lab

Systems Biology Basket



- Cellular Fuel and cellular communication
- Disease Biology
- Nano-Biotechnology
 - Medical and Nanobiotechnology Specialization Lab

Medical and Nano-biotechnology Basket



Other Mandatory Courses

- Seminar
- Research Methodology
- IPR and Biosafety

Total 72 credits

Facilities

- Advance materials and Research Center
- BioX
 - Cell Biology Lab • Immunology Lab • Molecular Biology Lab • Metabolic System Biology Lab • Next-generation Sequencing Lab with High-Performance Computation Facility • Neuroscience and Fly lab • Proteomics Lab • Worm Lab • Tissue Engineering Lab

Faculty Advisor MTech BT


Rajanish Giri, Ph.D.

Associate Professor

School of Biosciences and Bioengineering

Indian Institute of Technology Mandi, Himachal
Pradesh, India, 175005


 rajanishgiri@iitmandi.ac.in

 +91-1905-267154, +91-9816014007

CONTACT US

The Career and Placement Cell,
IIT Mandi (Kamand Campus)
Himachal Pradesh- 175005,
India

 placement@iitmandi.ac.in

 +91-1905-267006

FACULTY ADVISOR (CNP CELL)

Dr. Tushar JAIN

Associate Professor

School of Computing and Electrical
Engineering

Indian Institute of Technology Mandi,
Himachal Pradesh, India, 175005

 advisorcnp@iitmandi.ac.in

 +91-1905-267920


STUDENT REPRESENTATIVE

Jitesh Adwani

MTech. (Biotechnology with Specialization in
Systems Biology)

School of Biosciences and Bioengineering

Indian Institute of Technology Mandi, Himachal
Pradesh, India, 175005

 t21160@students.iitmandi.ac.in

 +91-9462750251

PLACEMENT CELL EXECUTIVE

Nimisha N B

Career and Placement Cell

Indian Institute of Technology Mandi,
Himachal Pradesh, India, 175005

 nimisha@iitmandi.ac.in

 +91-7807625022